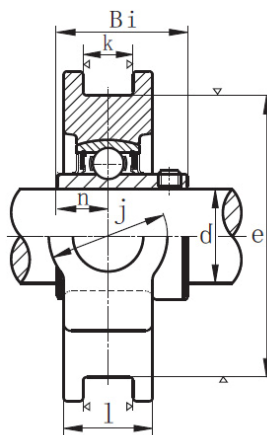
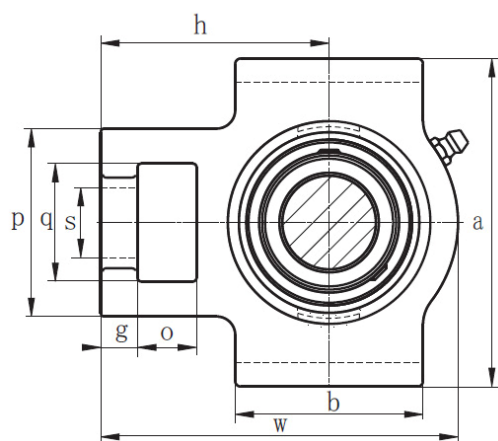
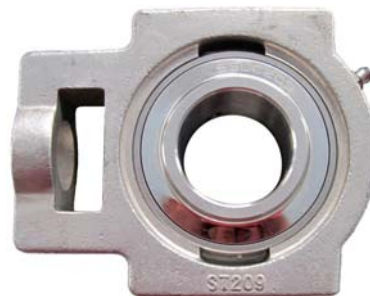


Composition:
 Corps: Acier inox AISI 304 - Roulement: Acier inox AISI 440
 La face d'appui du palier est pleine et ne présente pas d'évidement.



Références	Dimensions en mm																Charges kN		Poids kg
	d Ø axe	O	g	p	q	s	b	K	e	a	W	j	l	h	Bi	n	Dyn C	St. Co	
SUCT 202	15	16	10	51	32	19	51	12	76	89	94	32	21	61	31	12.7	10.9	5.3	0.79
SUCT 203	17	16	10	51	32	19	51	12	76	89	94	32	21	61	31	12.7	10.9	5.3	0.79
SUCT 204	20	16	10	51	32	19	51	12	76	89	94	32	21	61	31	12.7	10.9	5.3	0.79
SUCT 205	25	16	10	51	32	19	51	12	76	89	97	32	24	62	34.1	14.3	11.9	8.3	0.83
SUCT 206	30	16	10	56	37	22	57	12	89	102	113	37	28	70	38.1	15.9	16.7	9.05	1.30
SUCT 207	35	16	13	64	37	22	64	12	89	102	129	37	30	78	42.9	17.65	22	12.3	1.30
SUCT 208	40	19	16	83	49	29	83	16	102	114	144	49	33	88	49.2	19	24.9	14.31	2.40
SUCT 209	45	19	16	83	49	29	83	16	102	117	144	49	35	87	49.2	19	28.1	16.4	2.40
SUCT 210	50	19	16	83	49	29	86	16	102	117	149	49	37	90	51.6	19	30.2	18.6	2.50
SUCT 211	55	25	19	102	64	35	95	22	130	146	171	64	38	106	55.1	22.2	34	25.5	4.00
SUCT 212	60	32	19	102	64	35	102	22	130	146	194	64	42	119	65.1	25.4	41	31.5	5.00